

Two-story home with three bedrooms, den, three baths and second floor master suite with access to the upper level lanai. Main floor features spacious great room and dining area with opening to grand lanai. The kitchen offers views of both front and rear with huge center island for entertaining and informal dining.




---

Main level	1,321
Upper level	1,185
<b>Living area</b>	<b>2,506</b>

---

Main Level Lanai	370
Upper Level Lanai	160
Entry	126
Garage	539
<b>Total</b>	<b>3,701</b>



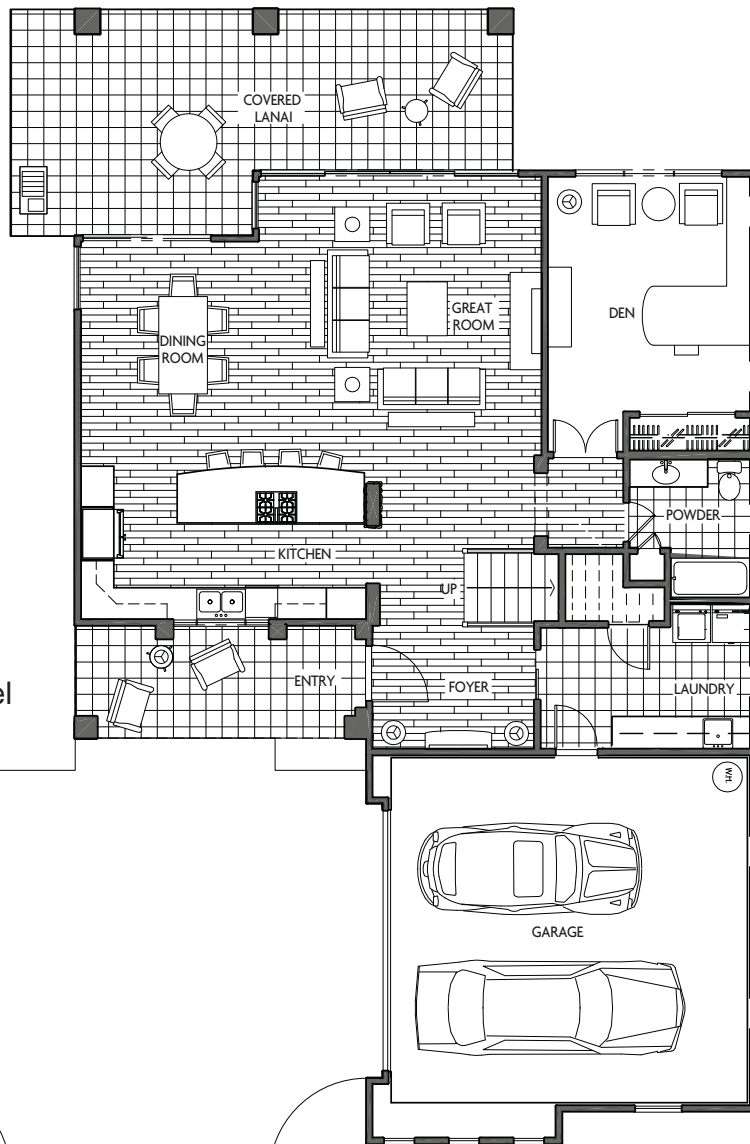
*Signature Development*  
OF HAWAII



OF HAWAII

*Hollanti Custom Homes*  
OF HAWAII

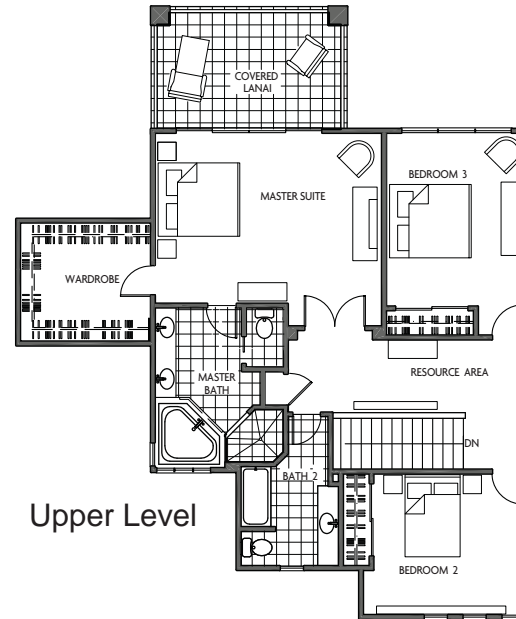
Model 220



Main Level



*Hollanti Custom Homes*  
OF HAWAII



Upper Level

Main level	1,321
Upper level	1,185
<b>Living area</b>	<b>2,506</b>

Main Level Lanai	370
Upper Level Lanai	160
Entry	126
Garage	539
<b>Total</b>	<b>3,701</b>



*Signature Development*  
OF HAWAII

© Signature Development of Hawaii. These architectural plans and the home constructed pursuant to the plans are the exclusive copyrighted property of Signature Development of Hawaii and are protected by United States copyright law. Any unauthorized use of these plans is strictly prohibited. Copyright 2004.

Artist's concept - this illustration may show options not included in the base price.



## **Community**

- Breathtaking views of the ocean, mountain and Elleair Maui Golf Course
- Extraordinary infinity waterfall pool center
- Community clubhouse for neighborhood gathering or private parties

## **Signature Exterior**

- Architecturally designed exteriors and floor plans
- Stucco exteriors with tiled lanais
- Monier tile roofs
- Concrete driveway with oversized courtyard garage
- Carriage garage door with two transmitters and keyless entry
- Exposed eaves with grooved profile
- Energy-efficient, maintenance-free windows and sliding doors with low E glass
- Professional landscaping and sprinkler system
- Textured glass front door
- Dramatic covered entry

## **Signature Living Areas**

- Solid two panel enameled doors with satin nickel lever hardware
- Tile floors in kitchen, foyer, dining room, bathrooms and laundry room
- Carpet in great room, den and bedrooms
- Drop-in laundry sink and cabinet
- Solid surface counter tops in laundry and bathrooms
- Rocker switches
- Pre-wired rough-ins for security and surround sound

- High tech wiring package including cable and phone jacks per model
- Engineered I-joists
- Attractive recessed lighting per model
- Custom wood stair railing system
- Ceiling fans in great room, master bedroom and lanai
- Access to lanai from dining room and great room
- Painted ceiling-cove moulding in main living areas
- Finished garage interiors

## **Signature Kitchen**

- Custom designed cabinets with accent glass uppers
- Granite slab counter tops with tile backsplash
- Gourmet stainless steel KitchenAid appliances including:  
Gas cook top, built-in oven/microwave combo, refrigerator, and dishwasher
- Recessed lighting with pendant accents over center island
- Dramatic center island with snack bar counter
- Elegant formal dining area per selected plans

## **Signature Master Suites**

- Vaulted, coffered ceilings per selected plans
- Spacious walk-in closets
- Solid surface counter top
- Ceramic tile floors, tub decks and showers
- Luxurious soaking tub

## **Signature Construction Features**

- High efficiency central air conditioning
- Tankless on demand gas water heater
- 200 amp electrical service



OF HAWAII

*Hollanti Custom Homes*  
OF HAWAII



*Signature Development*  
OF HAWAII